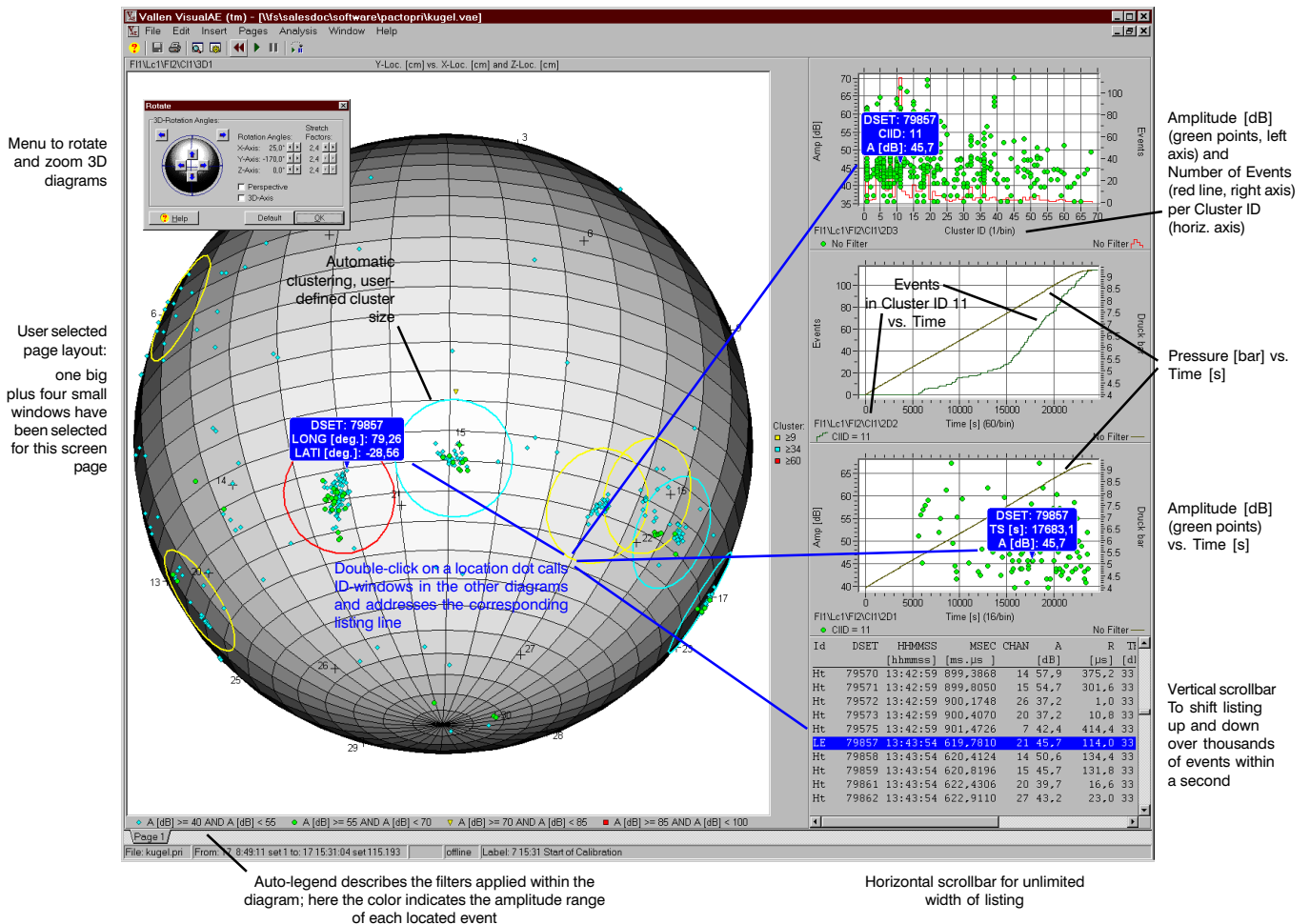


# High-End Software for DTA-Files

## Vallen VisualAE™: The New Dimension in Acoustic Emission Analysis

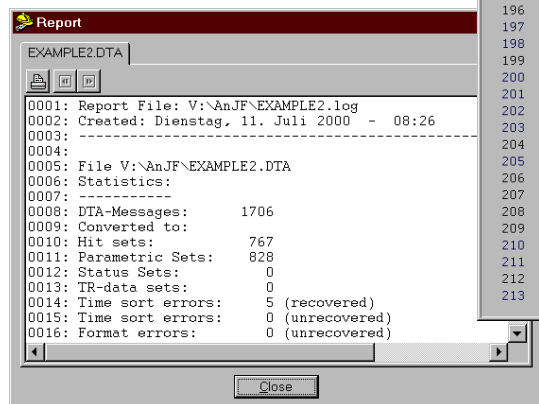
- Analyzes data recorded by AMS3, AMSY4, Locan, Spartan, Mistras, DiSP (and a converter for other equipment may also be available, please ask).
- Statistical AE analysis, many flexible location algorithms, user defined results, clustering, waveform analysis, pattern recognition, and more.
- Designed for 32-Bit Windows® 95/98/2000, NT, with Windows look and feel - GUI.
- 300+ pages context-sensitive on-line help with contents, index, search....
- Fast diagram export over clipboard or file, graphics or ASCII-tables.
- Fast and experienced hotline support by email/fax/phone.
- Regular updates on the web (see <http://www.vallen.de/download>).

### Screenshot example: AE-data from a storage sphere of 30m diameter

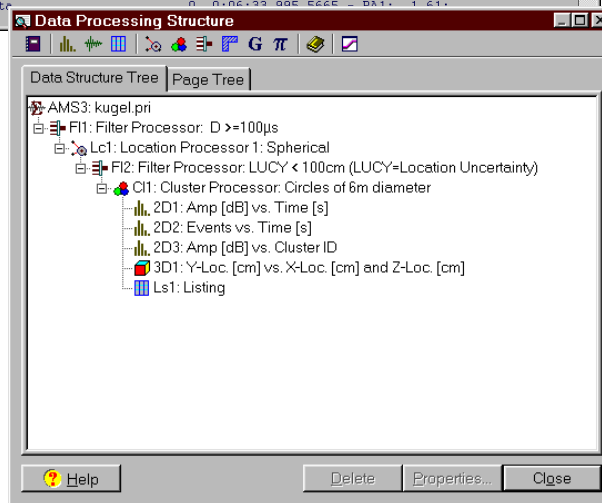


Think AE - think Vallen ! user friendly, reliable, up to date

The DTA-Converter analyzes the selected data file, decodes each individual data set and shows exactly where and how many time sort errors have been found on the file and if their correction has been successful.

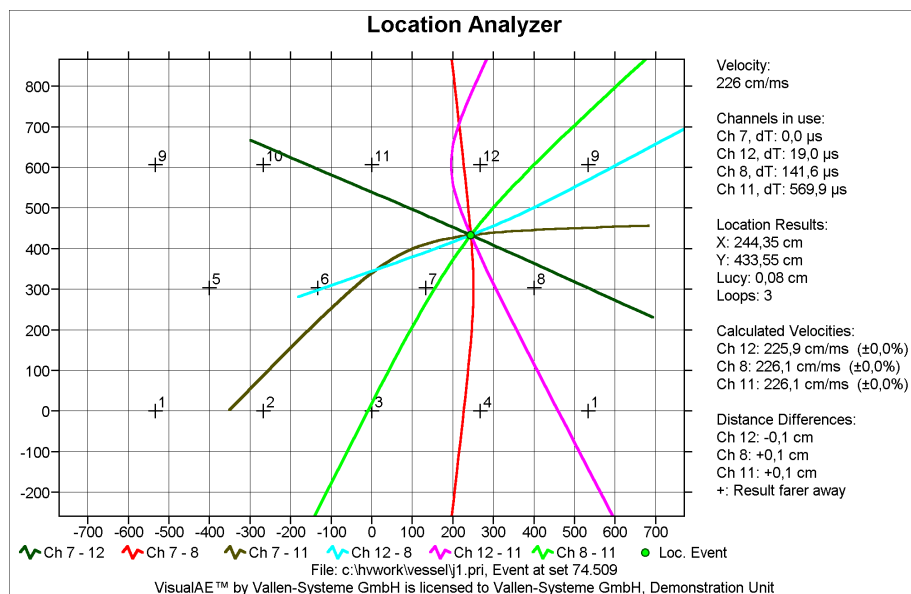


Line	ID	Sub	Len	ID-Description	Data	Description
195	2	0	10	Time Data	0	0:05:43 489.7960 - PA1: 1,30;
196	1	0	23	Hit Data	0	0:05:43 776.1185 - PA1: 1,30; Ch: 14; RiseT:
197	2	0	10	Time Data	0	0:05:48 540.3765 - PA1: 1,33;
198	2	0	10	Time Data	0	0:05:53 590.9550 - PA1: 1,36;
199	1	0	23	Hit Data	0	0:05:58 455.0952 - PA1: 1,37; Ch: 15; RiseT:
200	2	0	10	Time Data	0	0:05:58 641.5285 - PA1: 1,37;
201	2	0	10	Time Data	0	0:06:03 692.1070 - PA1: 1,39;
202	2	0	10	Time Data	0	0:06:08 742.6800 - PA1: 1,40;
203	2	0	10	Time Data	0	0:06:13 793.2575 - PA1: 1,43;
204	1	0	23	Hit Data	0	0:06:18 12.9545 - PA1: 1,45; Ch: 15; RiseT:
205	2	0	10	Time Data	0	0:06:18 843.8390 - PA1: 1,45;
206	1	0	23	Hit Data	0	0:06:19 109.4047 - PA1: 1,46; Ch: 7; RiseT:
207	1	0	23	Hit Data	0	0:06:21 694.1345 - PA1: 1,46; Ch: 12; RiseT:
208	1	0	23	Hit Data	0	0:06:21 694.3102 - PA1: 1,46; Ch: 9; RiseT:
209	1	0	23	Hit Data	0	0:06:23 252.0428 - PA1: 1,47; Ch: 1; RiseT:
210	2	0	10	Time Data	0	0:06:23 894.4180 - PA1: 1,47;
211	2	0	10	Time Data	0	0:06:28 944.9880 - PA1: 1,54;
212	1	0	23	Hit Data	0	0:06:30 958.2117 - PA1: 1,59; Ch: 6; RiseT:
213	2	0	10	Time Data	0	0:06:33 995.5665 - PA1: 1,61;



The Data Processing Structure (right) can be arranged by drag&drop. You can place diagrams and listings behind any processor as you want. You can see data filtered and unfiltered at the same time. The shown data processing tree was applied on the data screen shown on the front of this leaflet.

The Location Analyzer (below) shows the hyperbolae of all channel-pairs contributing to a location result (selected by a double click) and lets you play with delta-ts and velocities to see their influence. Never before AE-data analysis has been such flexible and transparent to the user.



Of course, you can also call the corresponding waveform data on the screen, simply by a double click, if acquired.

This describes only a very small part of VisualAE™, the software originally designed for the powerful AMSY4 equipment. Now, VisualAE™ can also be used with other equipment manufactures.

A free, time-limited evaluation version of VisualAE™ with full functionality is available.

**Just send us a fax or e-mail and start analyzing your data with Vallen VisualAE™!**

**Start now using powerful Vallen software, even if you don't have yet Vallen hardware:**

- VisualAE™:** statistical AE analysis, filtering, location calculation, clustering, and combined AE and waveform analysis with FFT, digital filtering, Gaussian Crosscorrelation, and more.
- VisualTR™:** the waveform analysis acceleration tool with many utilities for waveform management.
- VisualClass™:** proven, reliable, most transparent pattern recognition software for AE waveforms.

**Contact us today, we are pleased to answer your questions!**

Think AE - think Vallen ! User friendly, reliable, up-to-date